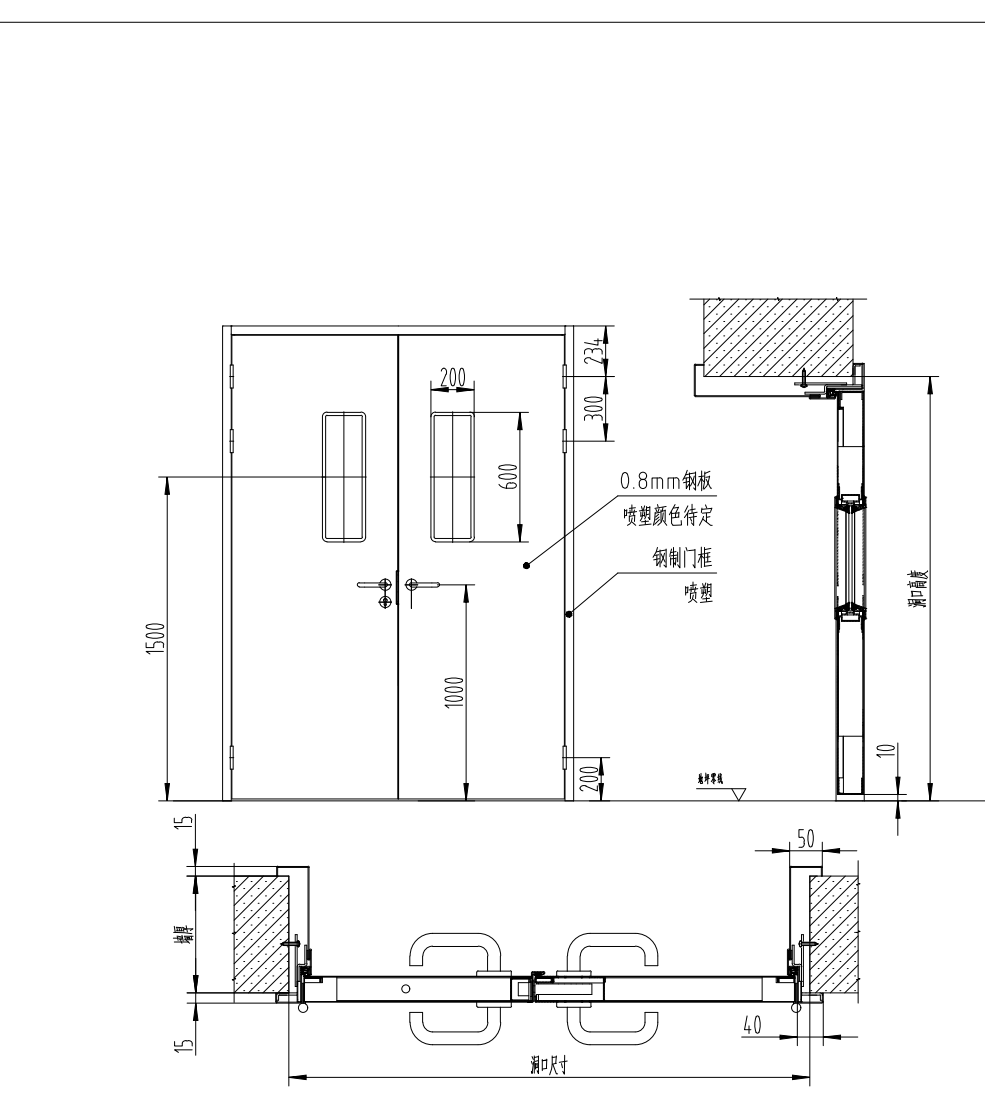
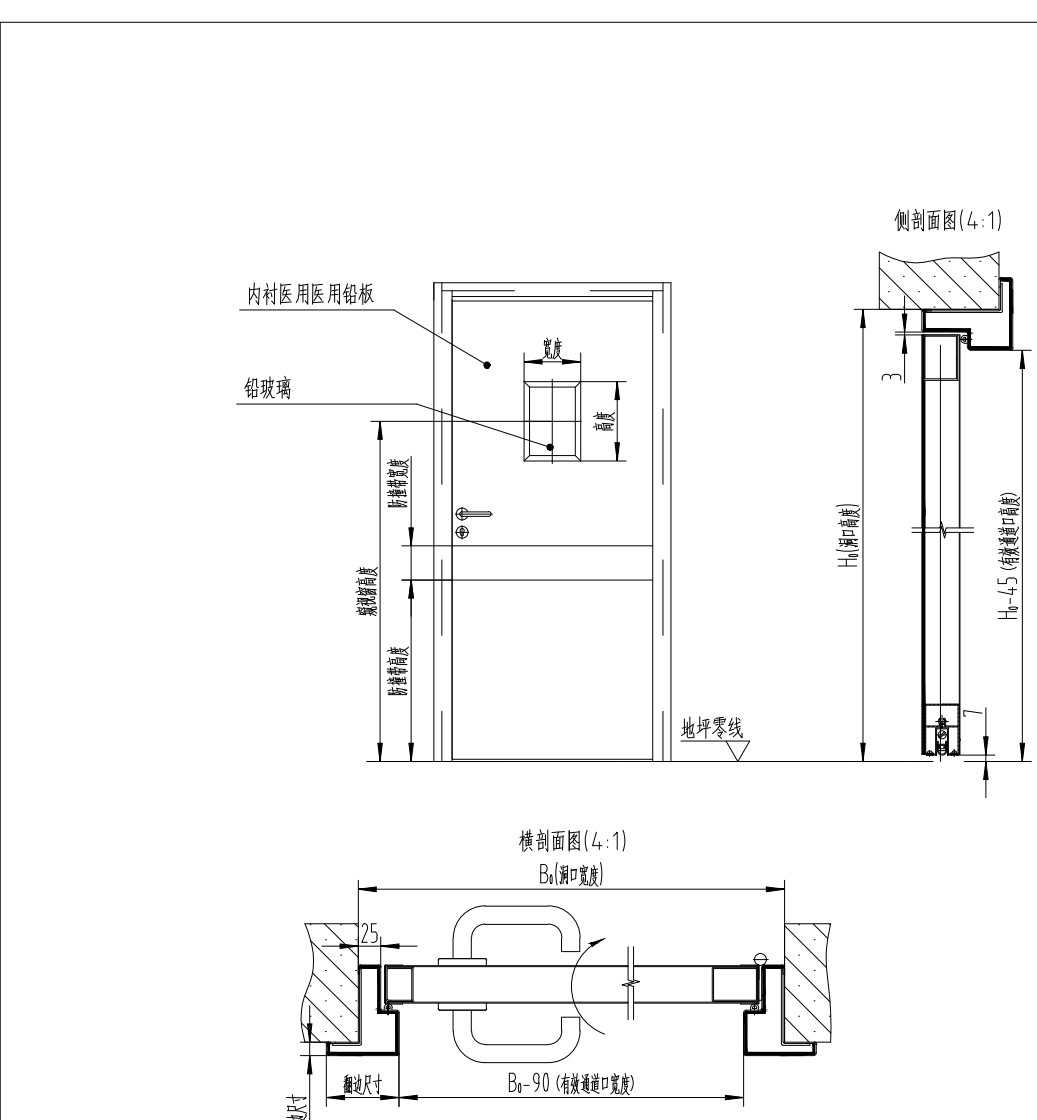


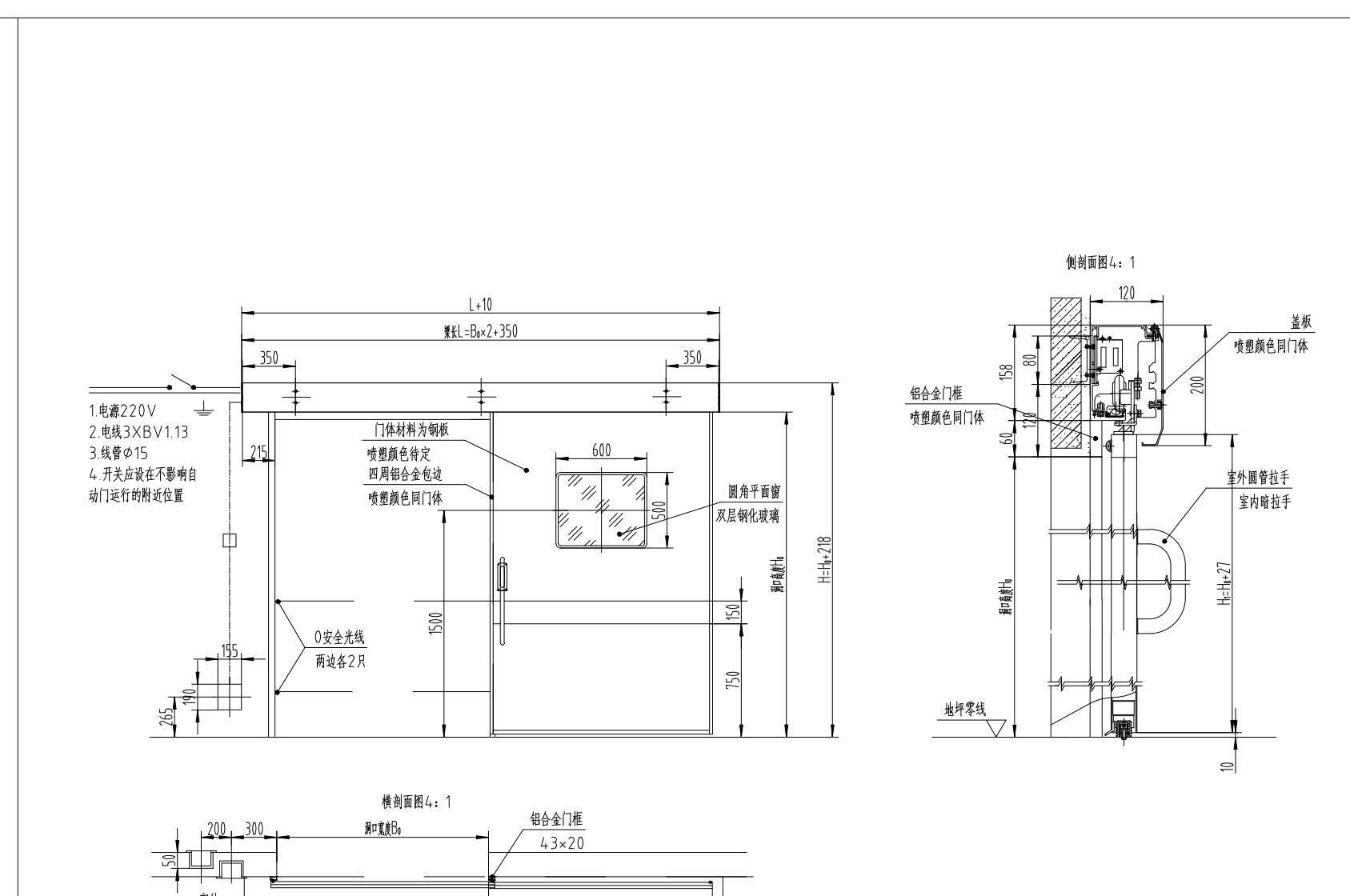
—	医用钢制门 GM10 DETAIL
---	----------------------



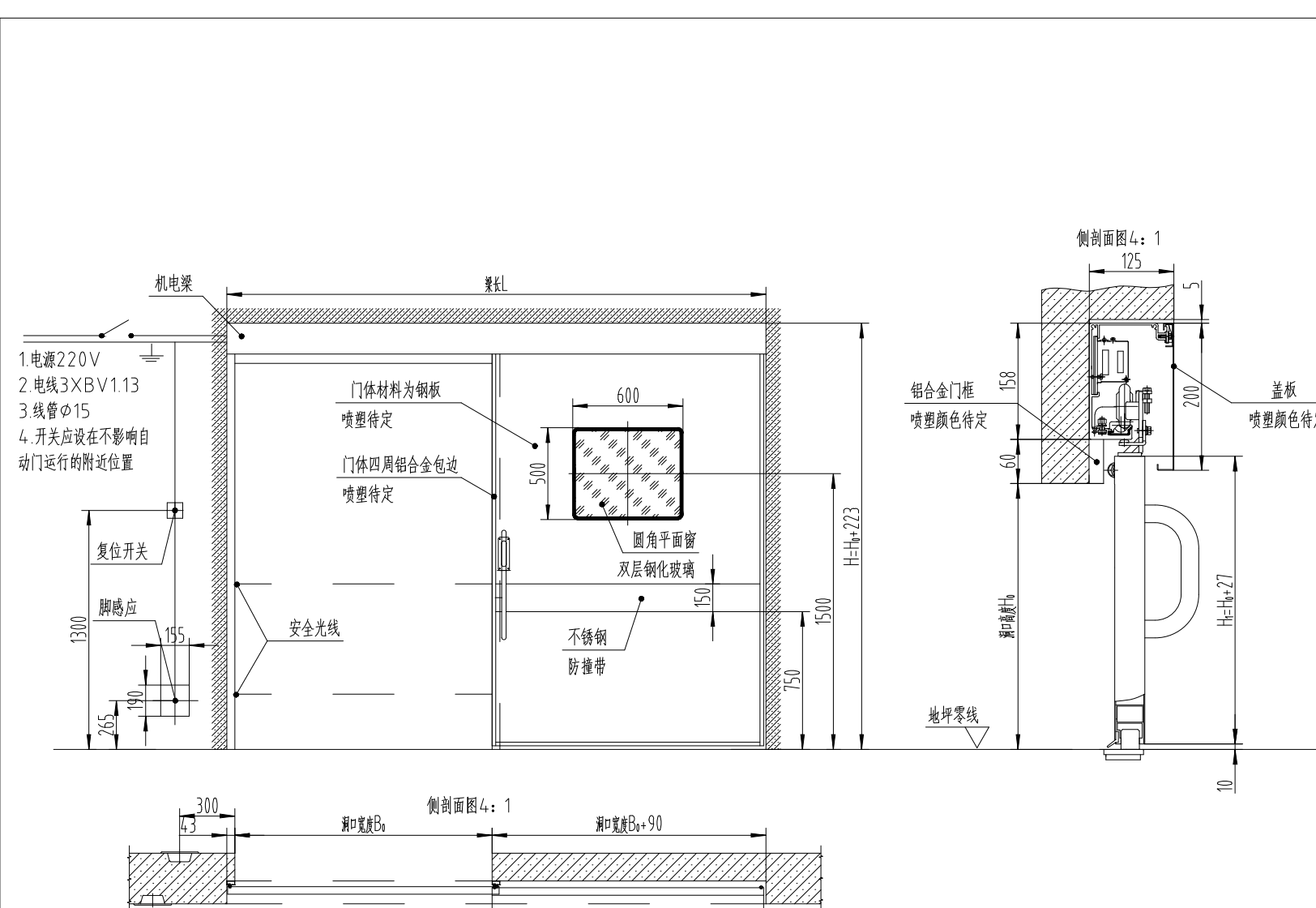
— 医用钢制门 GM15/18  
DETAIL



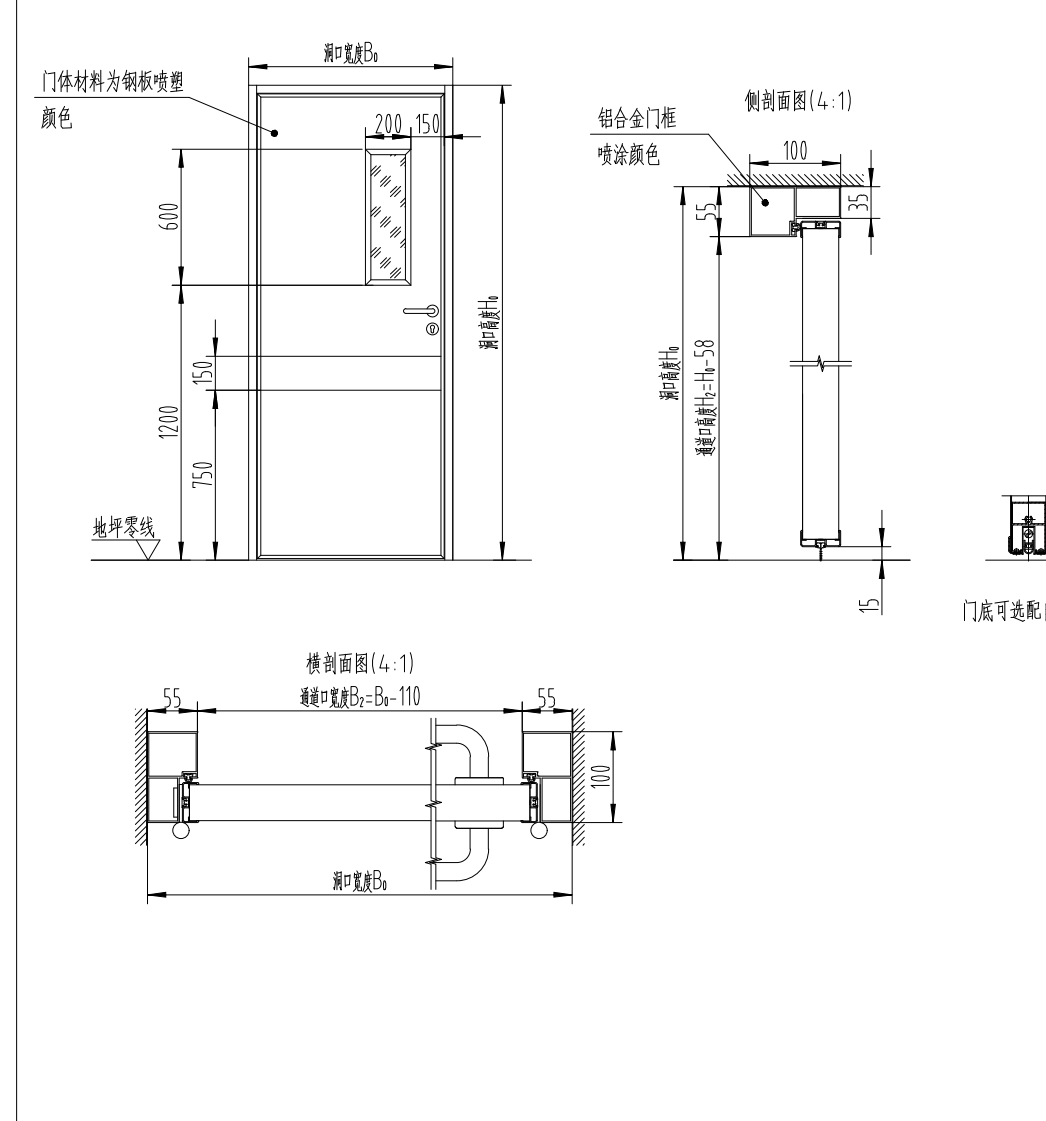
3 医用手动气密封平开门(防辐射) QM10-3XS  
DETAIL



—	医用自动趟门 ZDM15 DETAIL
---	------------------------

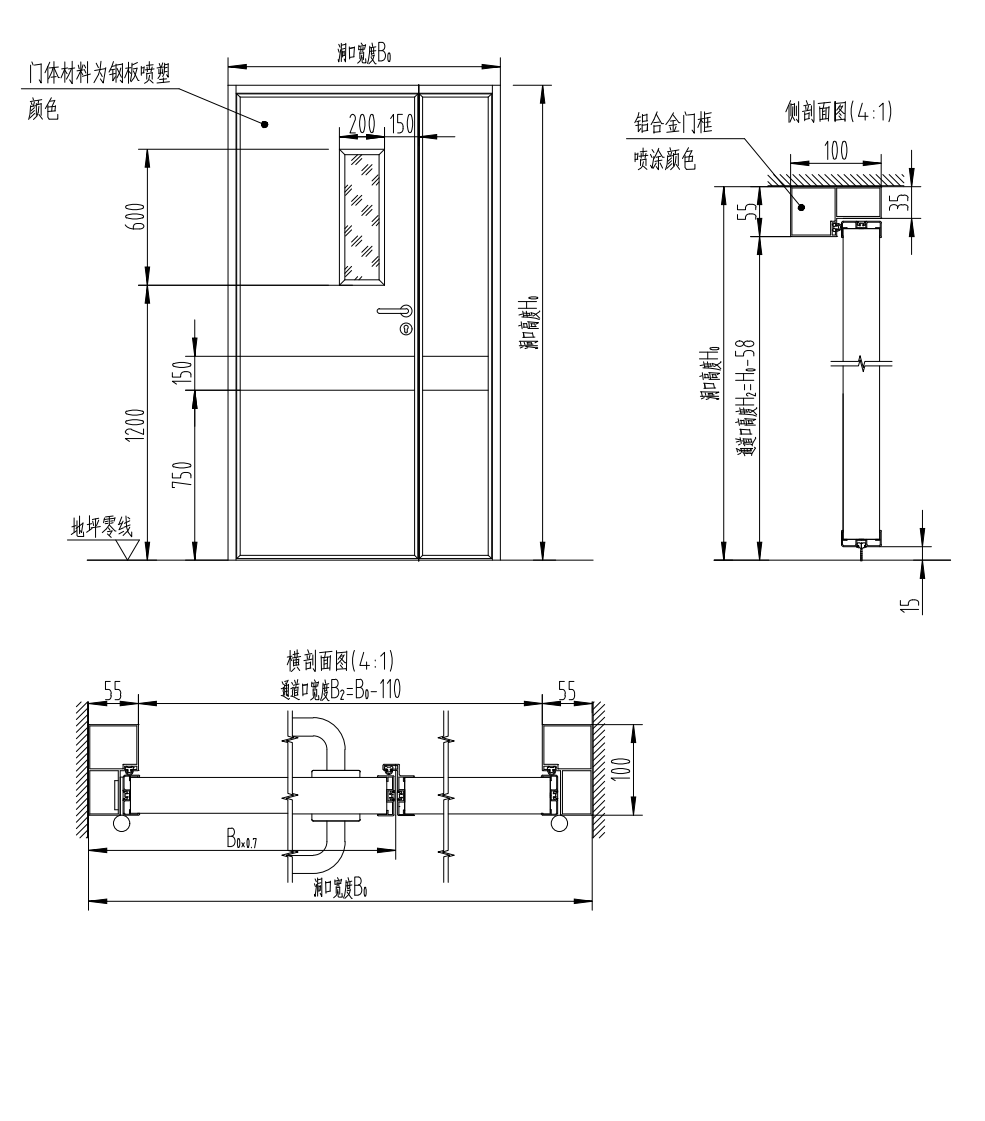


—	医用内嵌式自动趟门 ZDM15-A DETAIL
---	-----------------------------



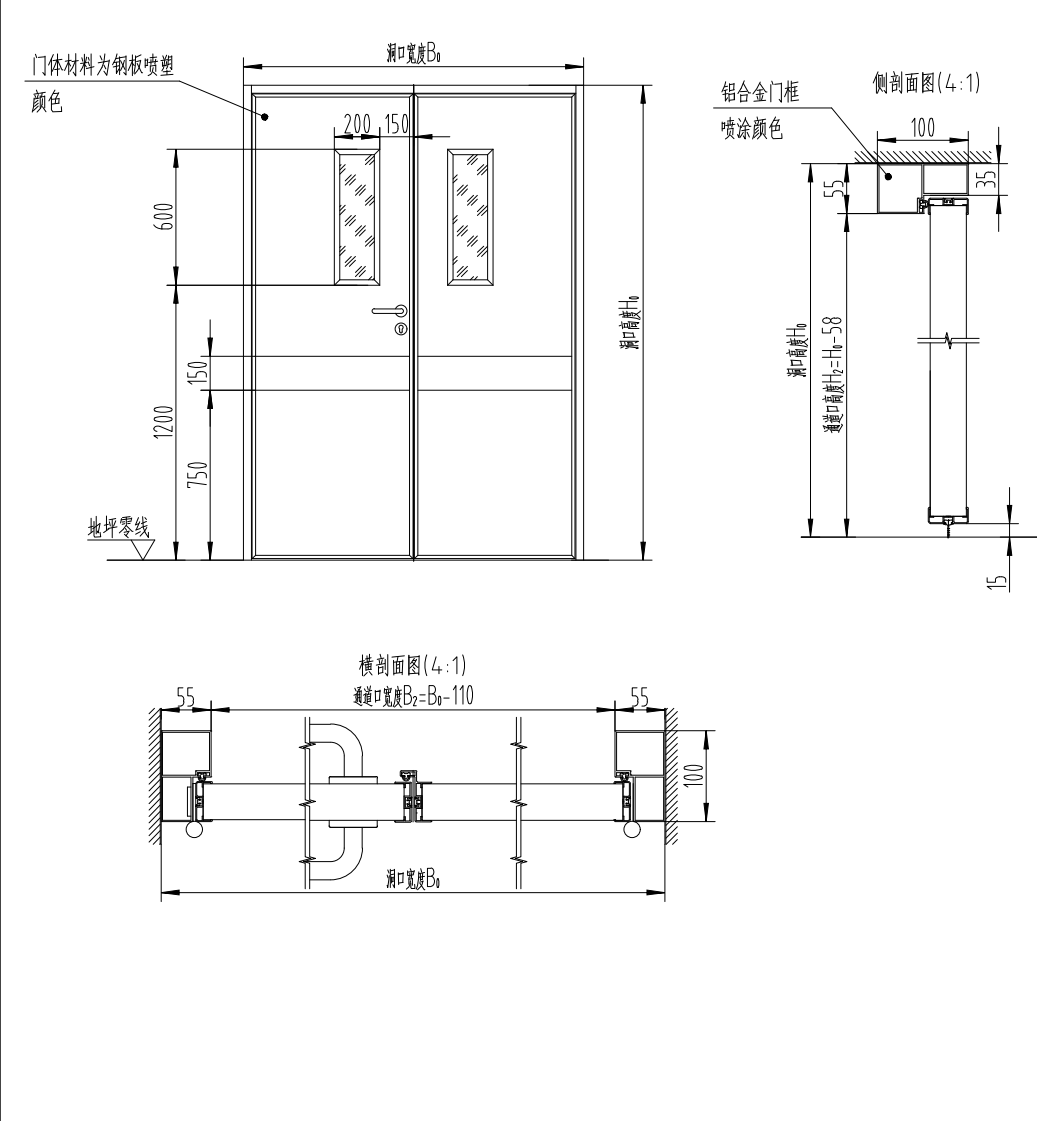
—	医用手动气密封平开门 QM10 DETAIL
---	---------------------------

适用于方钢管骨架组合



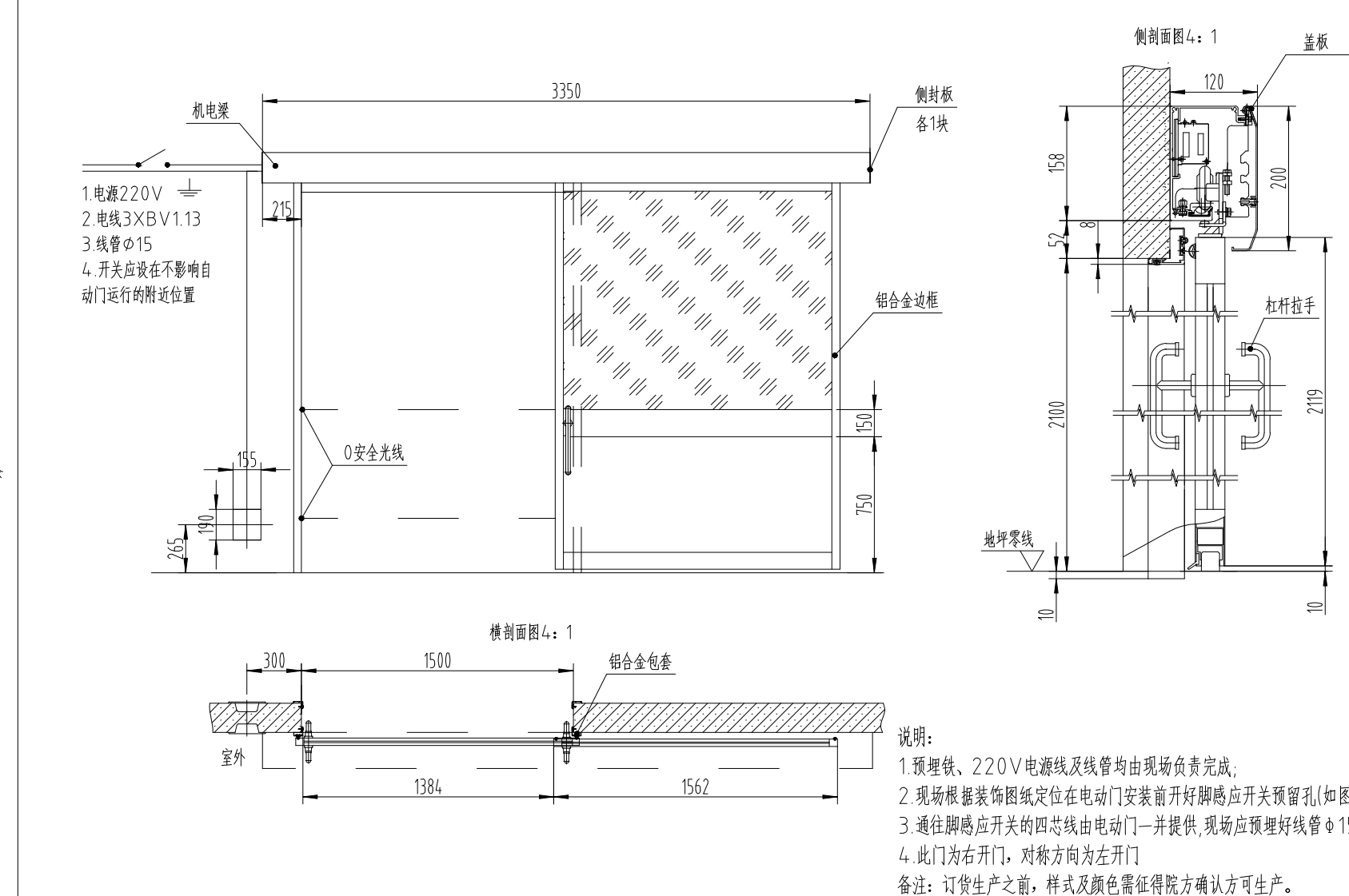
— 医用手动气密封平开门 QZM12  
DETAIL

适用于古铜龙骨墙饰

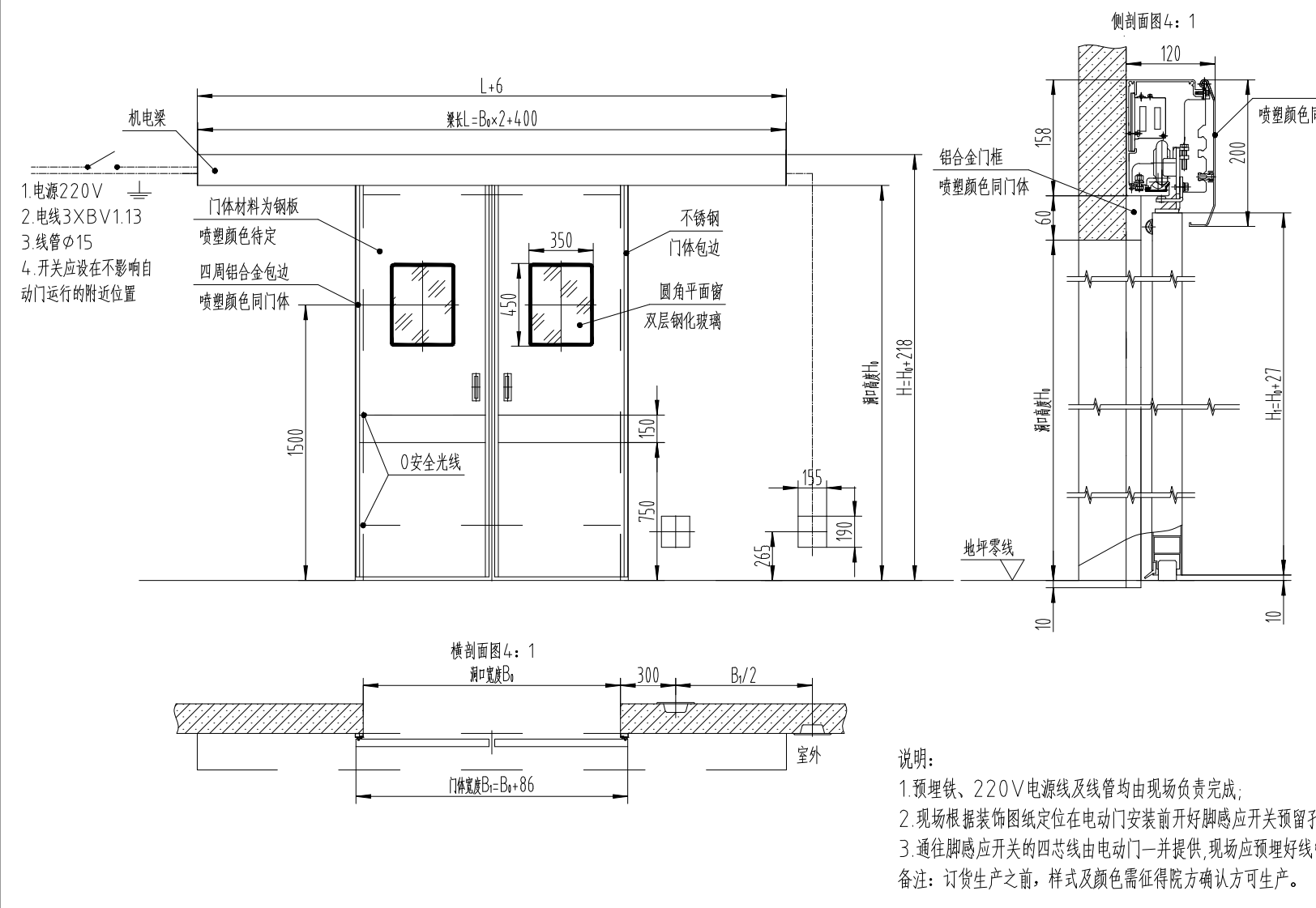


—	医用手动气密封平开门 QM15/18 DETAIL
---	------------------------------

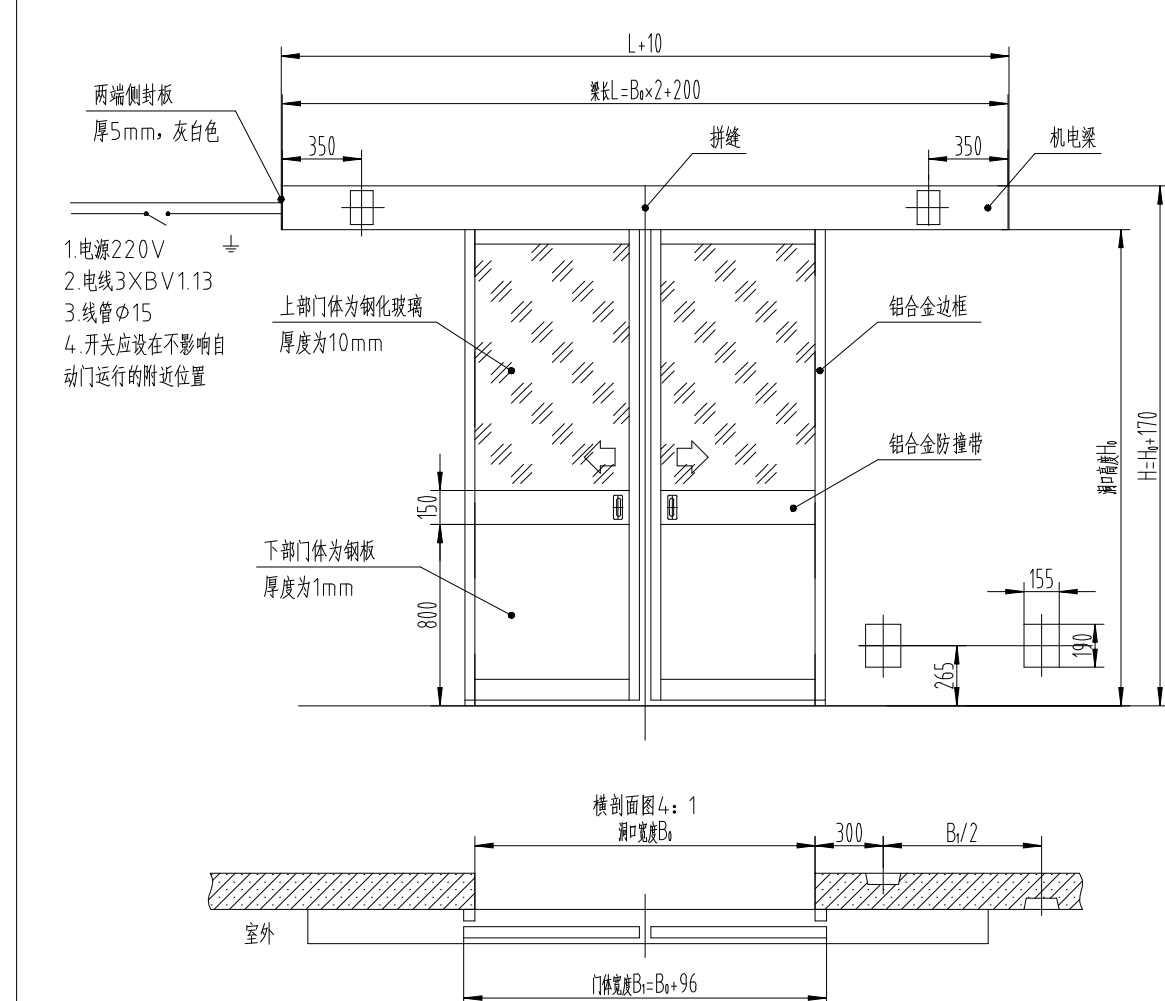
于方钢龙骨墙体



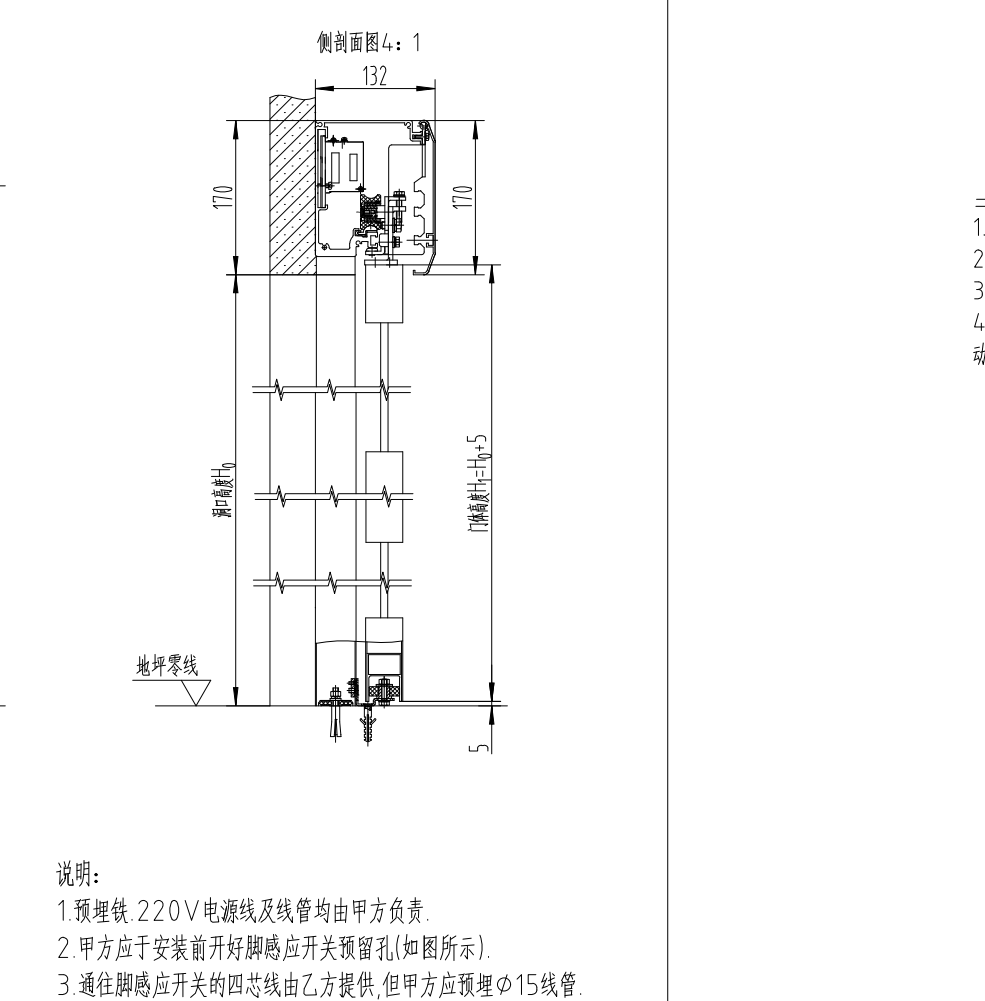
—	医用自动玻璃趟门 BZDM15 DETAIL
---	---------------------------



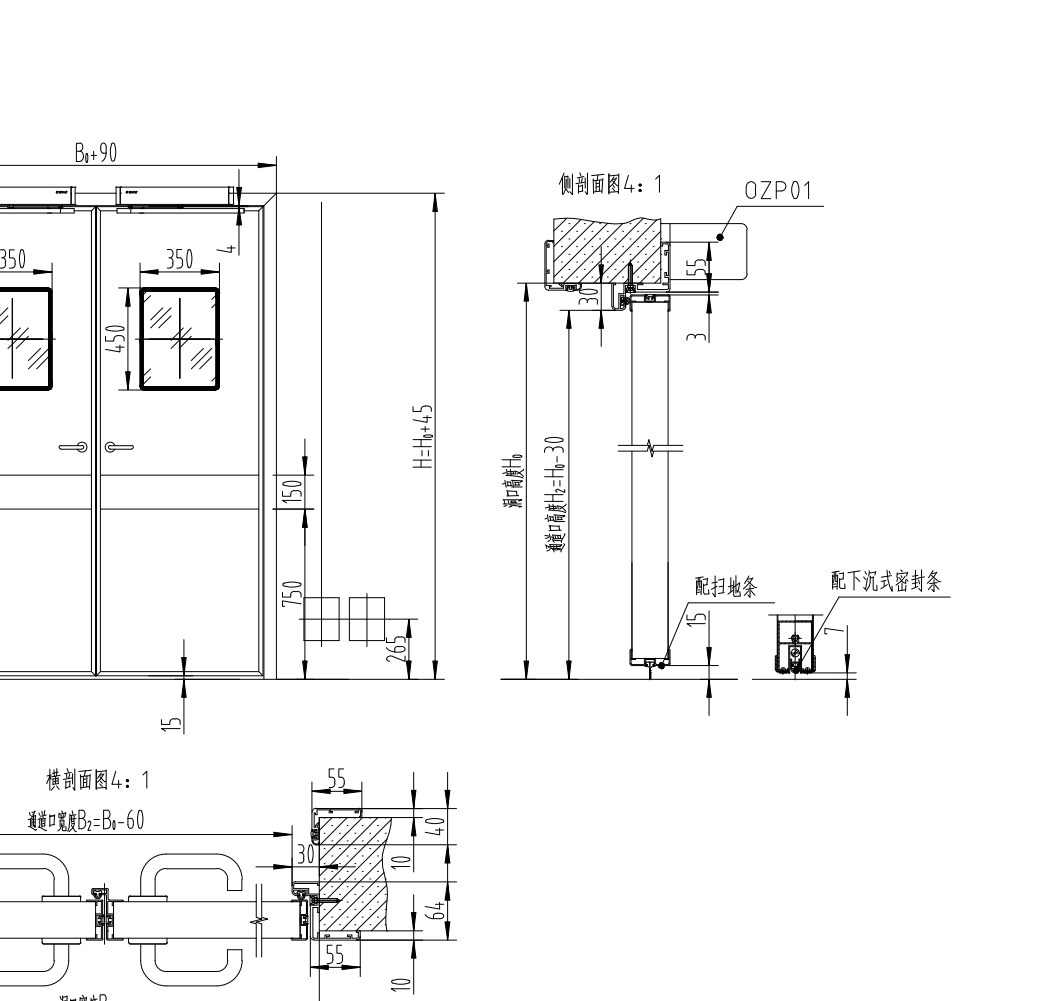
— 医用自动趟门 ※ZDM18  
DETAIL



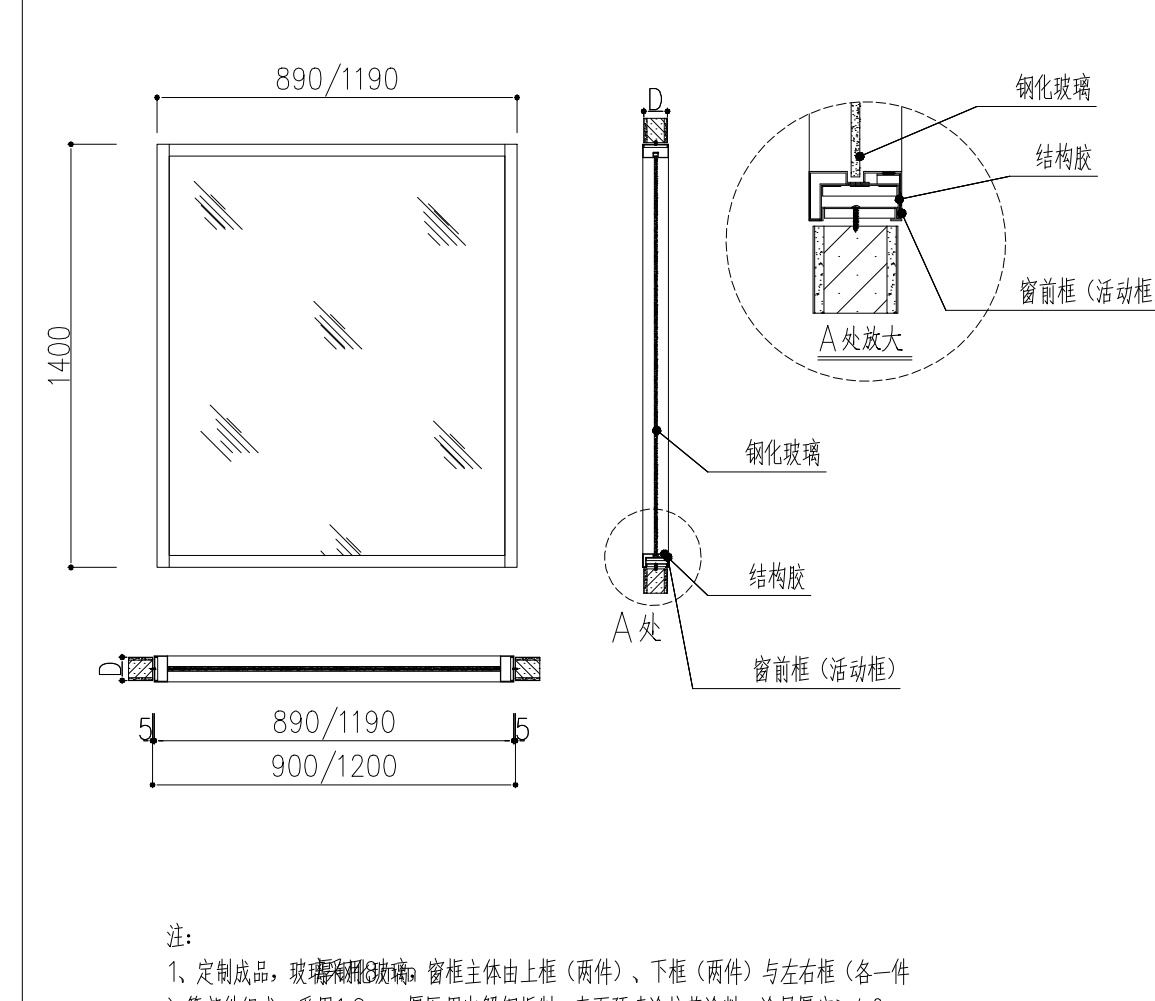
—	医用自动玻璃趟门 ※BZDM18/24
	DETAIL



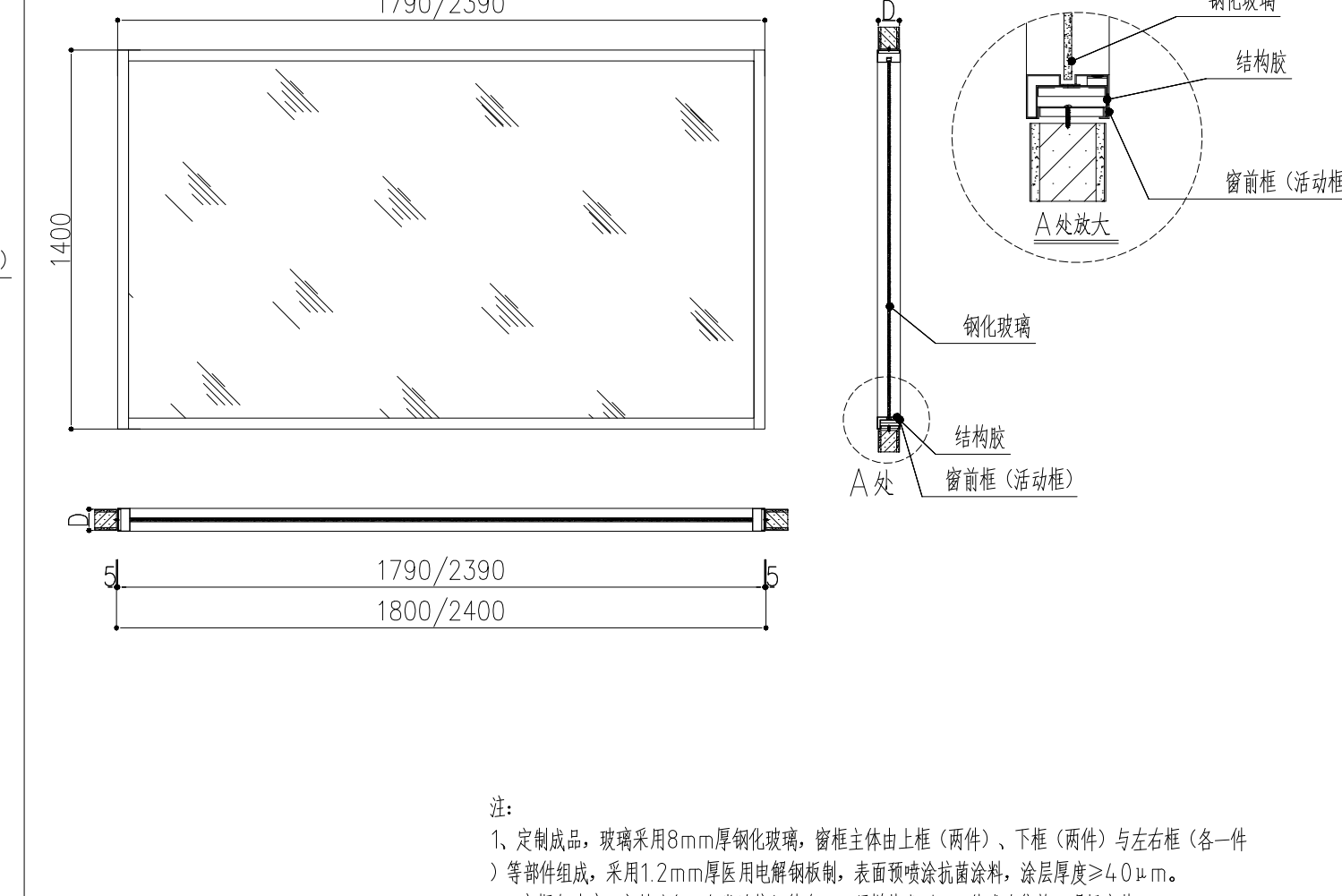
	—	医用自动平开门 ZDM15-P DETAIL
--	---	---------------------------



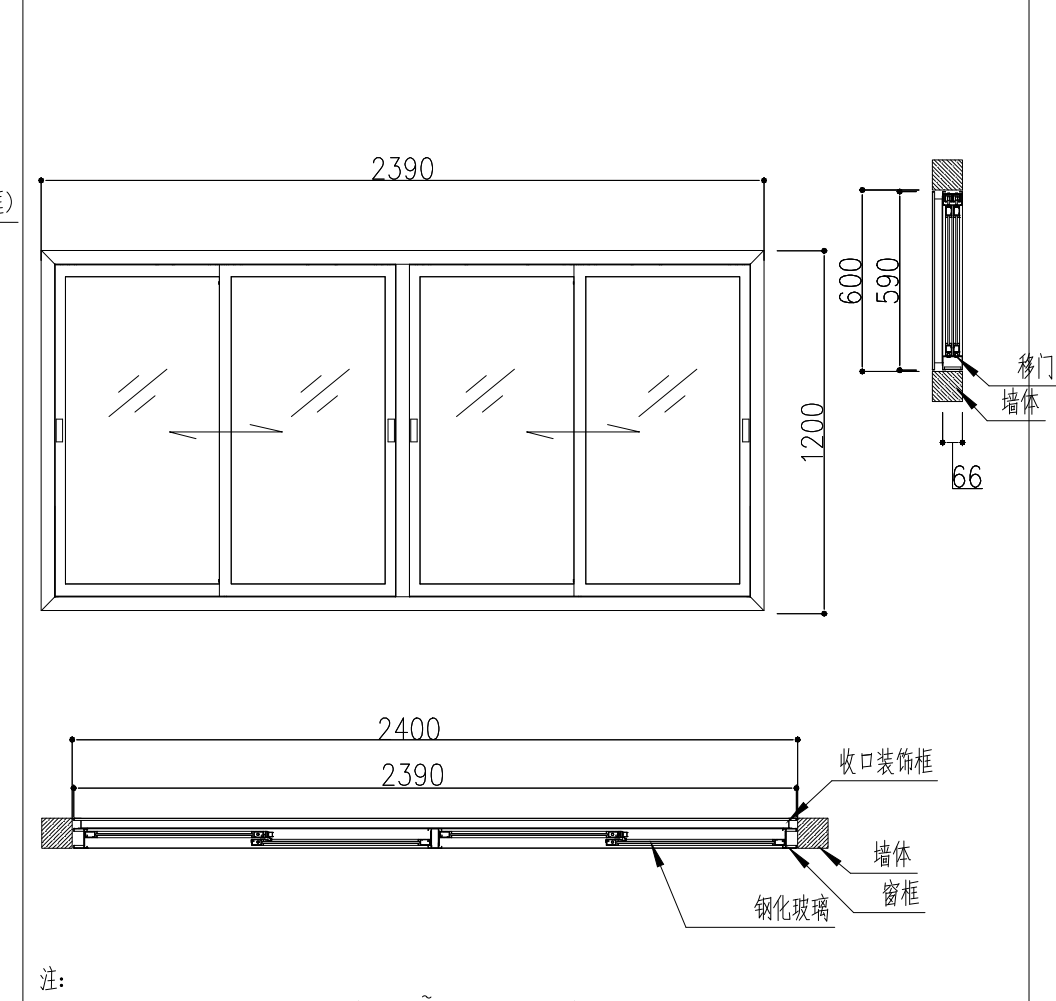
P



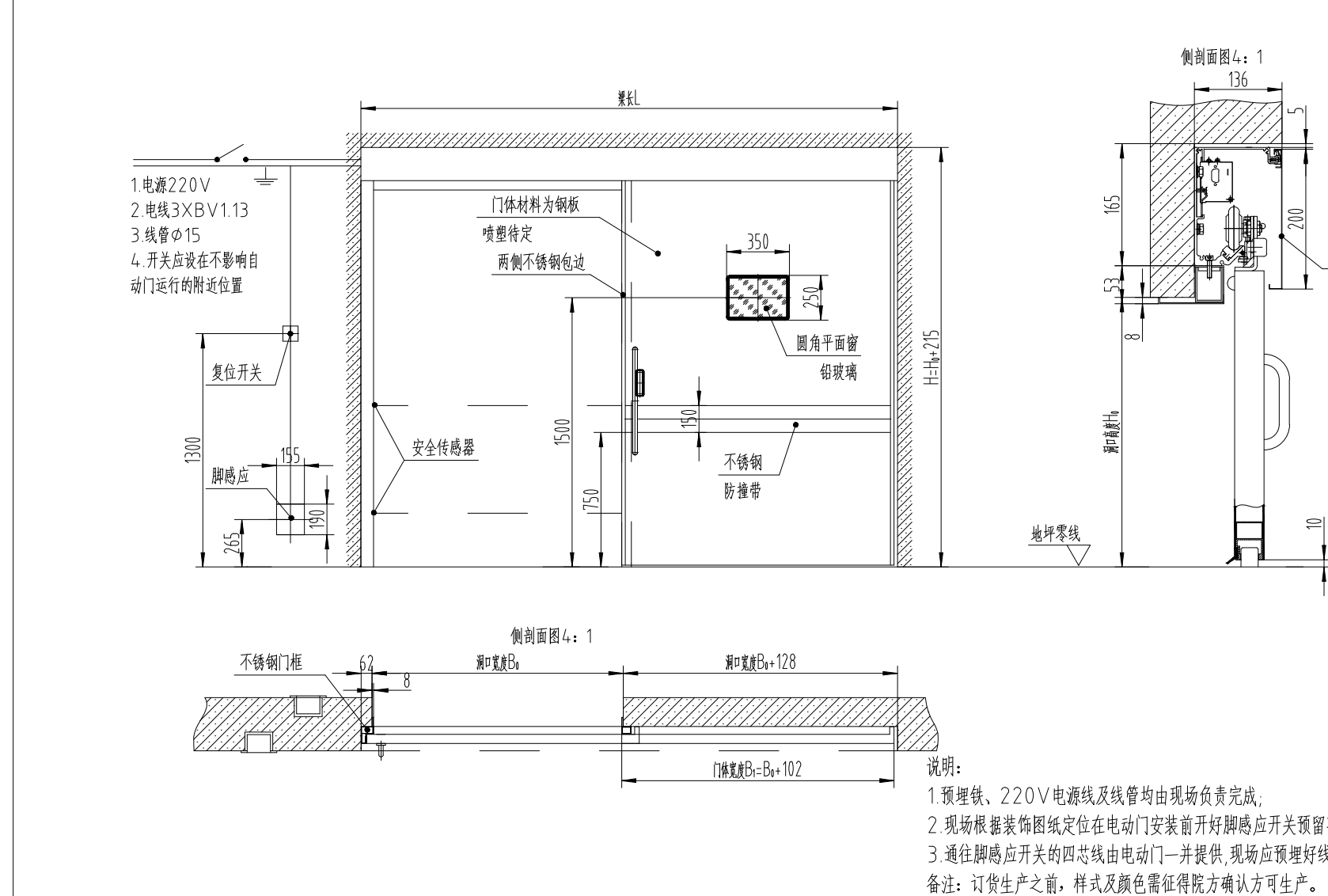
—	一体嵌入式气密封观察窗 QC09/1214
	DETAIL



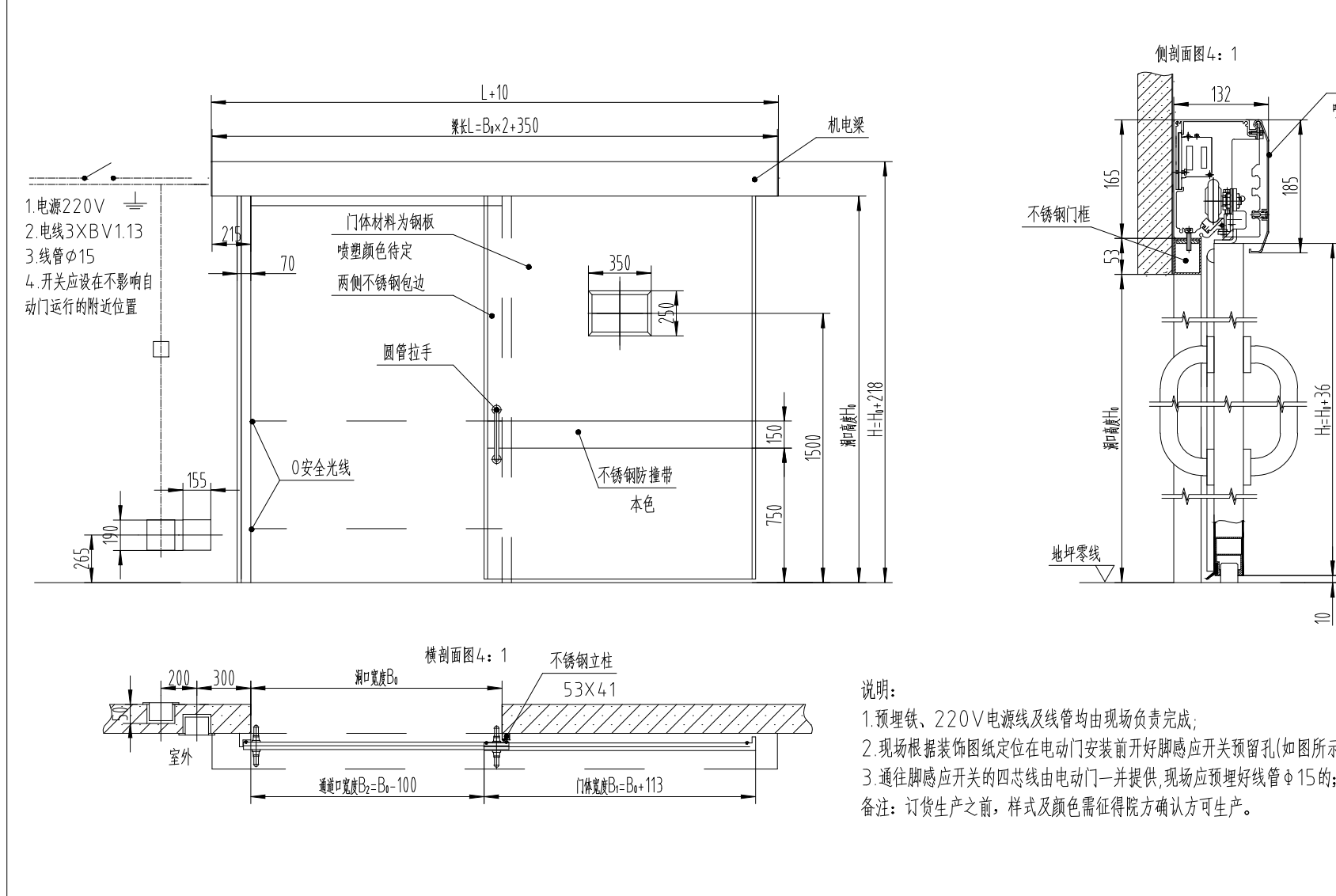
— 一体嵌入式气密封观察窗气密窗 QC2414  
DETAIL



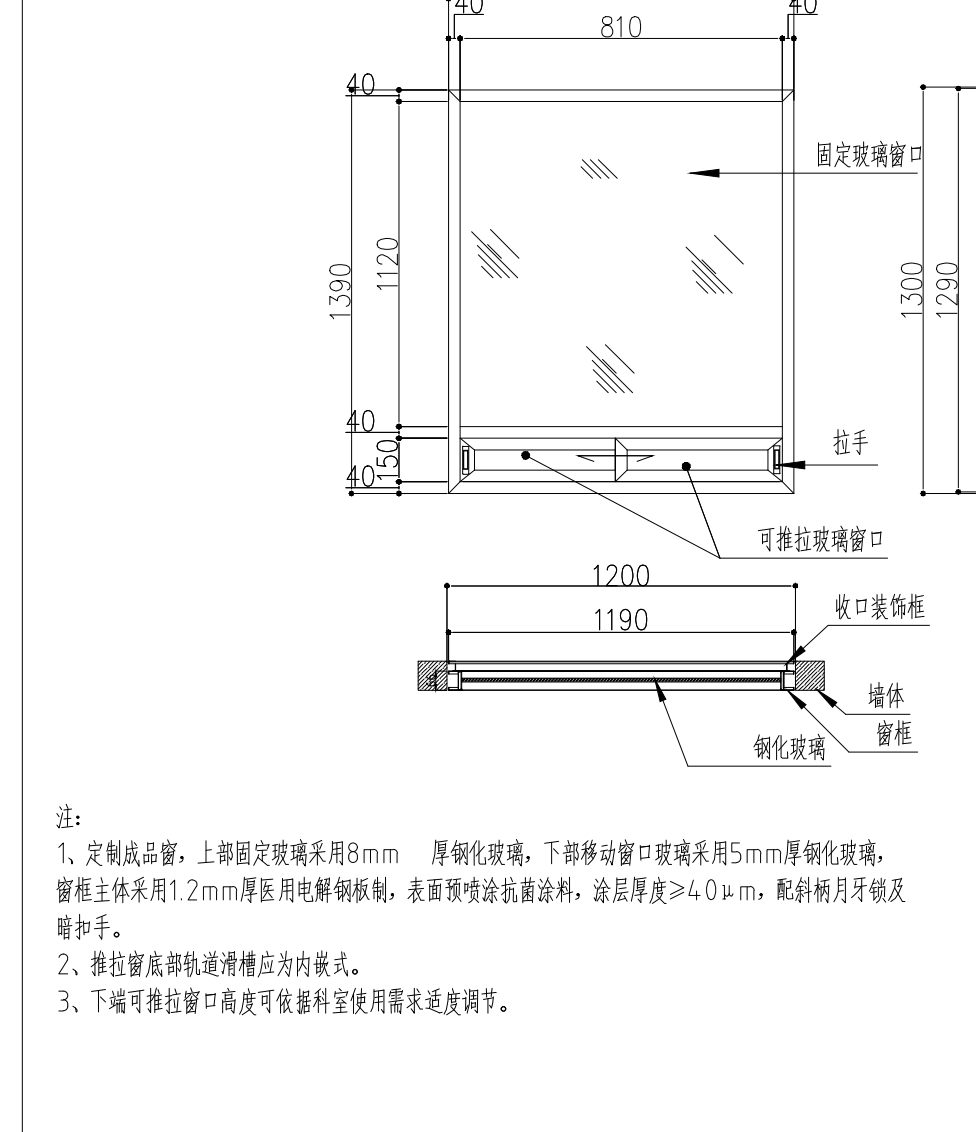
— 推拉窗 QC2414-T  
DETAIL



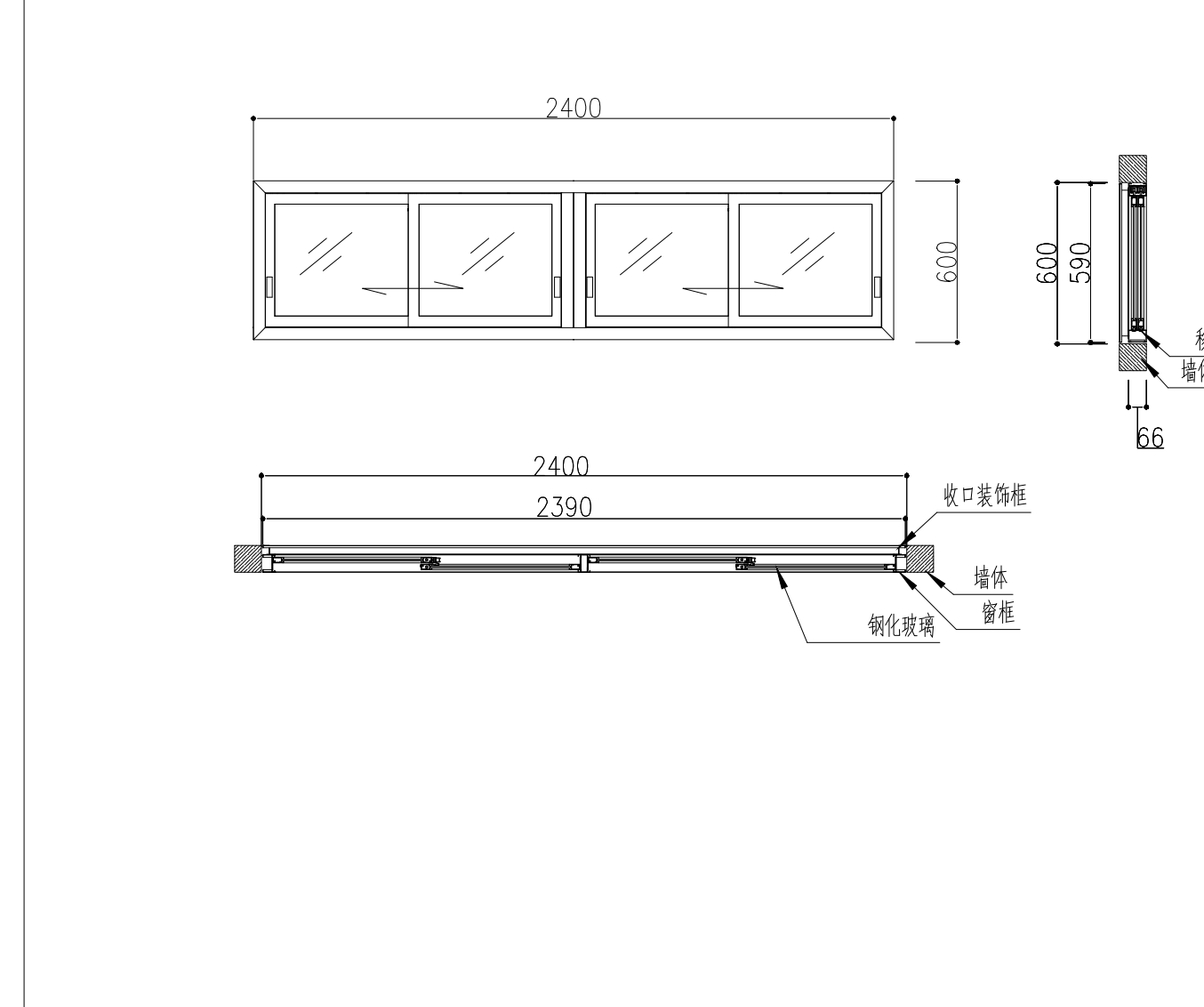
1	医用内嵌式自动趟门(防辐射) ZDM10-3XA/ZDM15-3XA/4XA DETAIL
---	--



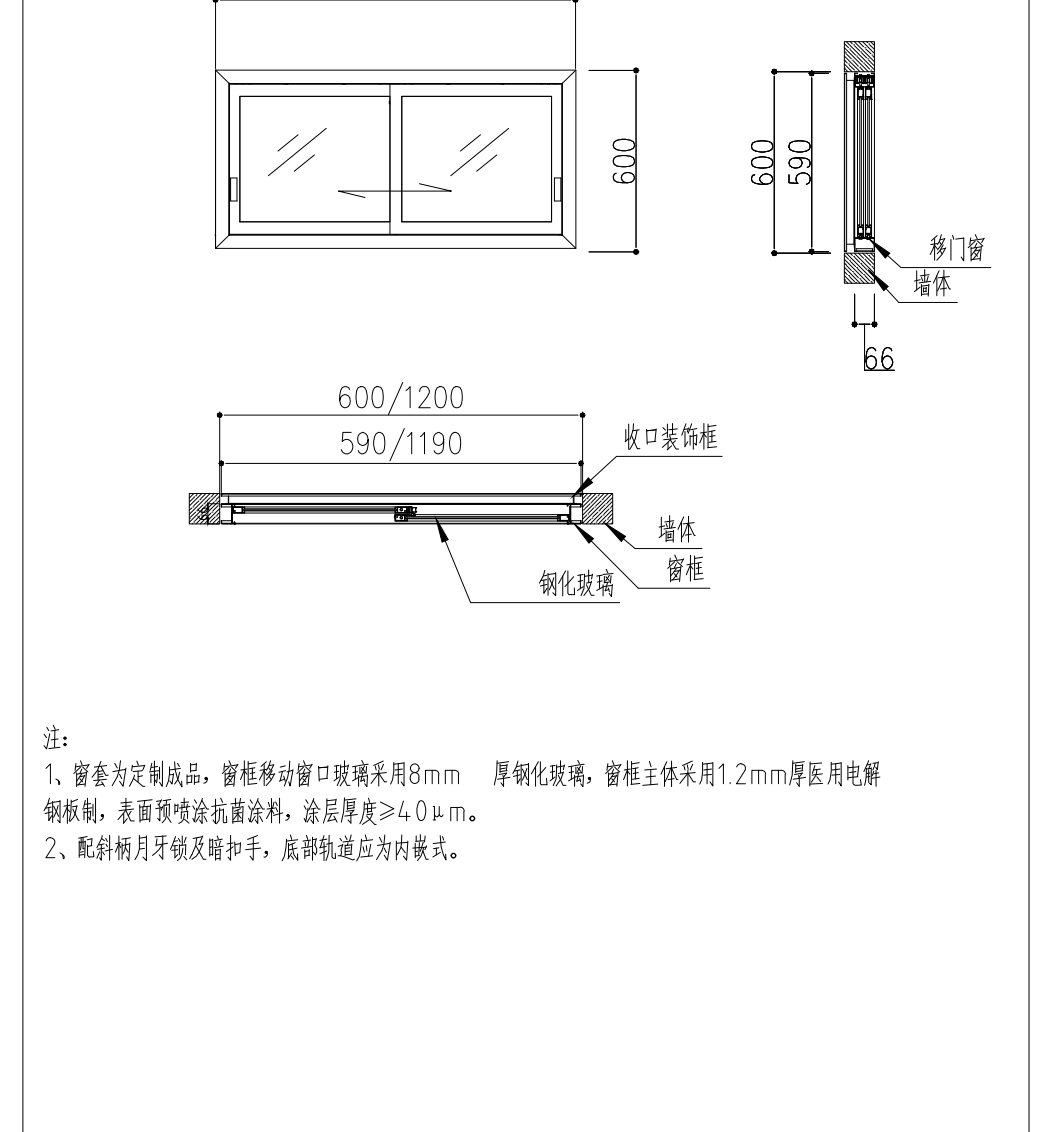
2	医用自动趟门(防辐射) ZDM09/10/11/15-3X/4X DETAIL
---	--



—	谈话窗 QTC0914 DETAIL
---	-----------------------



—	推拉窗 QC2414-7 DETAIL
---	------------------------



—	推拉窗 QC06/1214-T DETAIL
---	---------------------------